

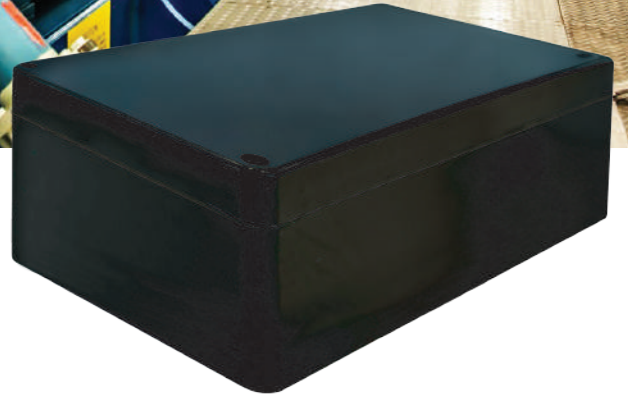
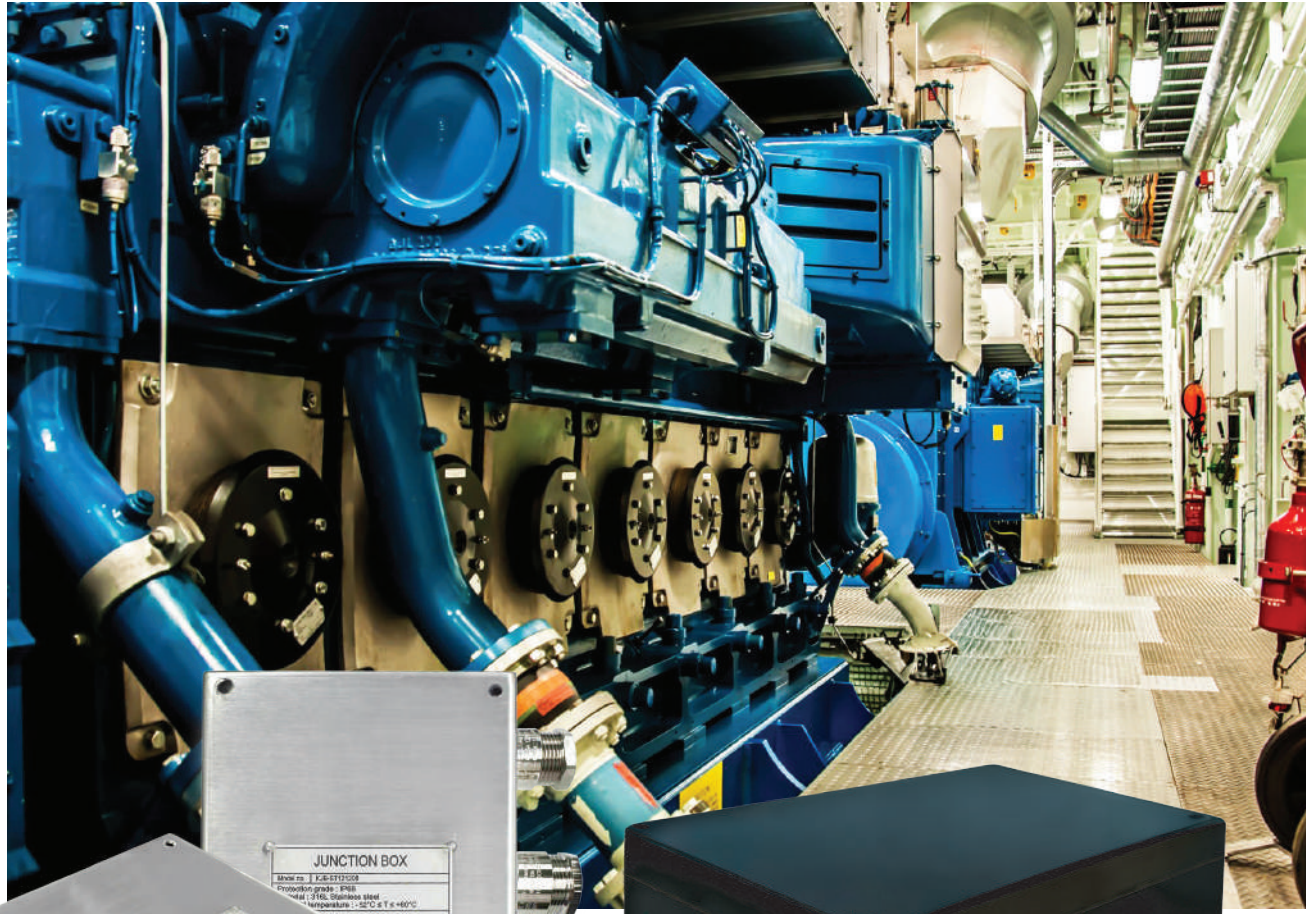
JUNCTION BOX

2024 It is produced by KME Co., Ltd

CATALOGUE

JUNCTION BOX

Electrical equipment that protects against external environments



Company introduction

· History

- 2024 12 **Kaune** sole agency in South Korea.
- 07 **Astro** sole agency in Marine Segment.
- 07 **B-15 fire back box** achieves BV Certification for fire protection.
- 2023 12 Registered vendor to **KANGNAM** Shipbuilding.
- 09 Registered vendor to **MODEC**.
- 08 Registered vendor to **SEATRIUM**.
- 03 Establishment of **Unit Toilet Factory**.
- 2022 05 Registered vendor to **HSG Sungdong** Shipbuilding.
- 04 Acquired ISO 45001:2018 certification.
- Registered vendor to **DAE SUN** Shipbuilding & Engineering Co., Ltd.
- 02 Registered vendor to **Hyundai** Heavy Industries.
- 2021 09 Registered vendor to **Zvezda** Shipbuilding in Russia.
- 06 Development of **GRP Ex Junction Box** certification completed.
- 2020 06 Registered vendor to **Hanjin** Heavy Industries.
- 2019 10 Registered vendor to **Hyundai Mipo** Dockyard (HMD) Co., Ltd.
- 2014 06 Registered vendor to **DAEWOO** Shipbuilding & Marine Engineering Co., Ltd.
- Low Location Light for H.3401
- 2013 10 Registered vendor to **SAMSUNG** Heavy Industries Co., Ltd.
- 2009 02 **Established KME Co., Ltd.**



※ For more information visit h-kme.com

· Location



Busan (Head Office)

29, Nakdong-daero1302 beon-gil,
Sasang-gu, Busan, South Korea



Gimhae (Office/factory)

25, Seobu-ro 1331beon-gil, Juchon-myeon,
Gimhae-si, Gyeongsangnam-do, South Korea



KME Customized Electrical Solutions for the Maritime Industry

KME designs, manufactures, and distributes electrical and electronic equipment specialized for the maritime industry, focusing on quality and reliability. We provide customized solutions tailored to meet customer requirements. In particular, we offer Junction Boxes optimized for marine environments, which meet various industrial demands. Our Junction Boxes are available in three materials: ABS, SUS, and GRP, each offering protection and durability suited for different environments.



Junction Box Overview

A Junction Box plays a critical role in protecting the connection points of electrical circuits. It safeguards electrical components from external environmental factors, ensuring the safety of electrical systems and providing easy access for maintenance. KME provides products with enhanced durability and waterproof performance, designed specifically for marine environments.

Junction Box Descriptions by Material

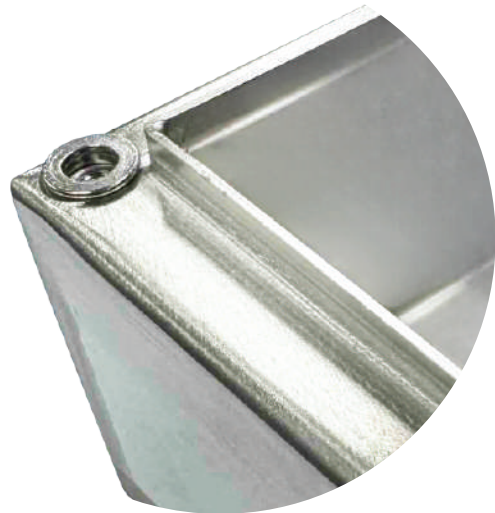


ABS (Acrylonitrile Butadiene Styrene)

ABS is a durable and impact-resistant plastic material. It has a lightweight structure and excellent electrical insulation, making it suitable for various electrical equipment enclosures.

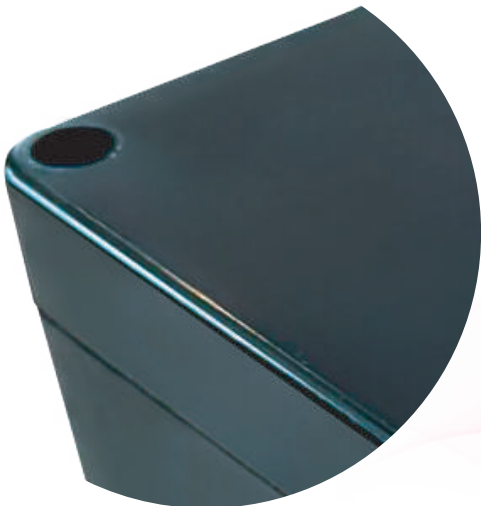
SUS (Stainless Steel)

SUS is a high-strength stainless steel with excellent corrosion resistance and durability. It is particularly suitable for environments with high humidity and salinity, such as marine conditions.



GRP (Glass Fibre Reinforced Polyester)

GRP is a glass-fiber-reinforced polyester material that offers a lightweight yet strong mechanical structure. It is resistant to corrosion and chemicals and has excellent UV resistance, making it suitable for outdoor environments.



Product Specifications and Detailed Descriptions



ABS JUNCTION BOX Specifications

IP44

- Model No: KME-JB-ABS
- L x W x H: 125mm x 65mm x 125mm
- **Protection degree: IP44**
- Materials: Body and cover - ABS RESIN
- Equipment: PG13.5-PG21 cable gland, 4-pole terminal block
- Electrical: AC 250V, 20A

SUS JUNCTION BOX Specifications

IP66

- Model No: KJB-ST121208
- L x W x H: 116mm x 91mm x 116mm
- **Protection degree: IP66**
- Materials: 316L Stainless Steel
- Ambient temperature: $-52^{\circ}\text{C} \leq T \leq 60^{\circ}\text{C}$



GRP JUNCTION BOX Specifications

IP66

- Model No: G121209, G161609, G261609
- G121209 (L x W x H): 122mm x 120mm x 90mm
- G161609 (L x W x H): 160mm x 160mm x 90mm
- G261609 (L x W x H): 260mm x 160mm x 90mm
- **Protection degree: IP66**
- Materials: Glass Fibre Reinforced Polyester (Black)
- Ambient temperature: $-60^{\circ}\text{C} \sim +40^{\circ}\text{C} / \text{T6}$ | $-60^{\circ}\text{C} \sim +55^{\circ}\text{C} / \text{T5}$





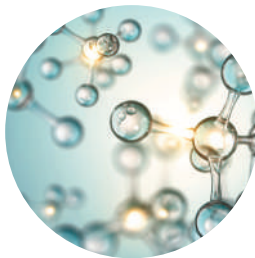
Applications and Features

Both ABS and SUS Junction Boxes provide reliable protection in marine environments, chemical processes, and industries with high humidity. Their superior waterproof and corrosion-resistant properties make them suitable for various applications.



Marine Environments

Provides excellent corrosion resistance on ships and port facilities, preventing damage from seawater and humidity while maintaining electrical system stability.



Chemical Processes

Ensures durability in environments exposed to various chemicals: ABS offers lightweight chemical resistance, while SUS provides strong corrosion resistance against chemical damage.



Humid Industrial Areas

Protects electrical circuits in power plants, factories, and water treatment facilities with IP44 waterproof rating, extending equipment lifespan in high-humidity conditions.



Future-Oriented Vision

KME Co., Ltd. is committed to continuous research and development to improve safety and efficiency in the maritime industry.



Continuous Innovation

We will lead the advancement of the maritime industry by continuously developing new technologies and solutions.



Global Partnerships

Strengthening our global network to create value in various markets by collaborating with customers worldwide.

KME's Junction Boxes boast superior quality and durability, offering optimized solutions tailored to customer needs. Experience safe and efficient electrical system construction with us anytime.





· **ADDRESS** : 29, Nakdong-daero1302 beon-gil, Sasang-gu, Busan, South Korea
· **TEL** : +82-51-327-2670 · **FAX** : +82-51-327-2673 · **E-mail** : sales@h-kme.com