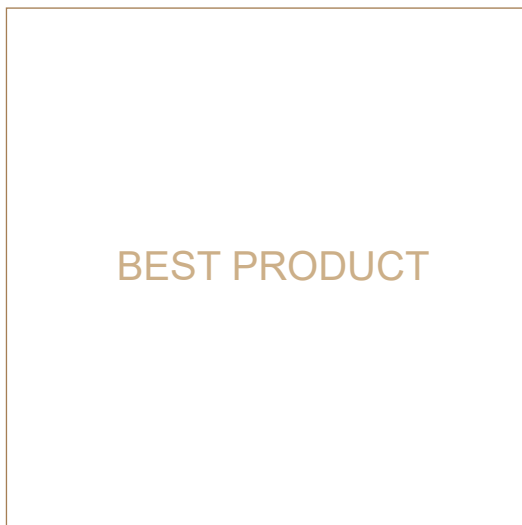
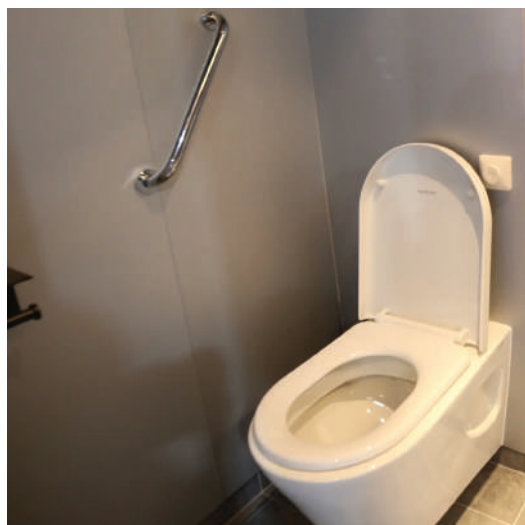
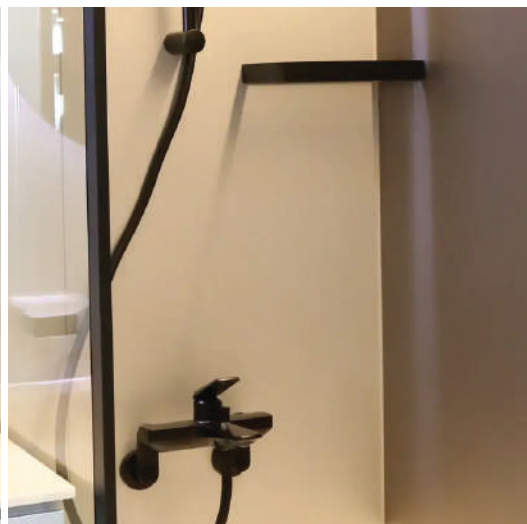
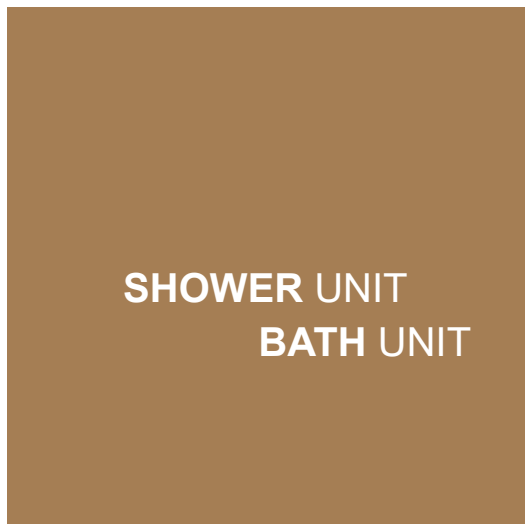
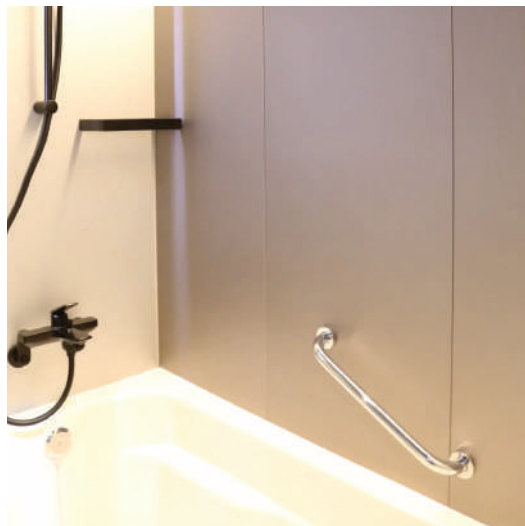


UNIT TOILET

High-Quality Customized Toilet System



PREFABRICATED WET UNITS

With many years of experience and specialised competence, KME offers fully fitted wet units. The KME wet units are ideal for marine accommodations, from cruise ships to offshore installations.

The KME wet units, whether standard or custom-made, are manufactured according to the strictest rules and regulations and are fabricated from only first-class materials.

In our design, the emphasis is on using durable solutions to ensure maximum quality, comfort, and well-being of our customers, whether they are ship owners, shipyards, or end users.

The units are manufactured with a great deal of consideration given to the ease of handling and installation.

Throughout the production process, the units are subjected to strict quality control to ensure that all of our materials conform to our policy of supplying only first-class quality.

KME products can be specially manufactured according to customer requirements and adhere to the highest product quality standards.

Thank you.



HIGH-END UNIT

Bath & Shower Type

KME UNIT TOILET provides type-specific functions, is durable, well-designed, and systemized, and offers a single finished product. We can directly produce and supply products of various designs, such as shower booth types and bathtub types, as well as customized designs based on customer standards.

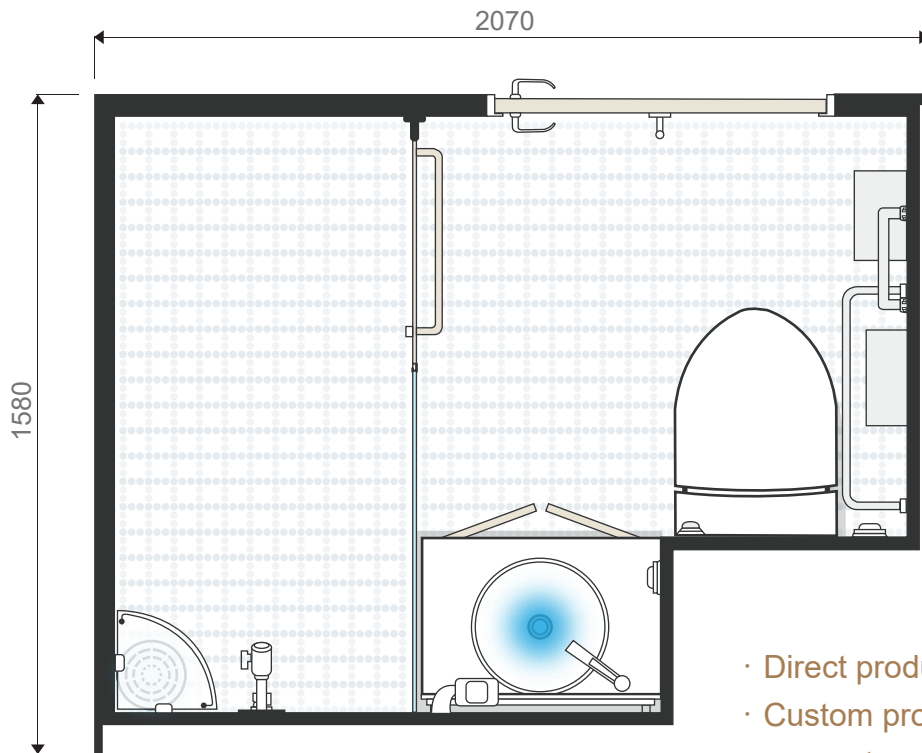
- Flexible Design
- High Quality
- Easy Handling
- Special production
- Competitive Pricing
- Simple Installation
- Compliance with Strict Regulations
- Made from Grade-A Materials



PREFABRICATED WET UNIT

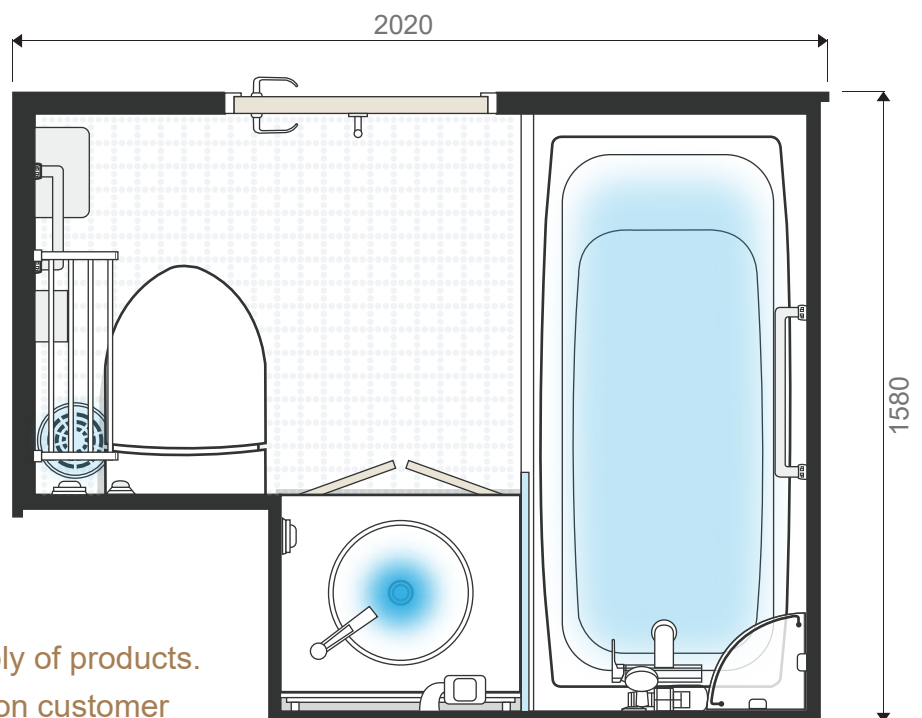
HIGH-END TYPE GENERAL TYPE

We can directly produce and supply products of various designs, such as shower booth types, bathtub types, and customized designs based on customer standards.



SHOWER TYPE

- Direct production and supply of products.
- Custom production based on customer requests.



BATH TYPE

- Direct production and supply of products.
- Custom production based on customer requests.

Specifications

HIGH-END TYPE GENERAL TYPE

• Shower • Bath

No.	Description	Specification	Model no	Q'TY / SET	
				S	B
1	FLOOR	MOSAIC TILE ON 3.2 mm STEEL PLATE (GROUTING : GRAY CEMENT)	KME STANDARD	1	1
2	INSIDE WALL PANEL	PAINTED ON 0.6mm GALV'D STEEL PLATE W/15mm MINERAL WOOL, TOTAL THK. 30mm	KME STANDARD	1	1
3	OUTSIDE WALL PANEL	PVC LAMINATED ON 0.6mm GALV'D STEEL PLATE W/15mm MINERAL WOOL, TOTAL THK. 20mm	KME STANDARD	1	1
4	DOOR FRAME	BAKED ENAMEL PAINTED ON 1.5mm STEEL PLATE CLEAR OPENING (600CW x 1800CH, 800CW x 1800CH (HOSPITAL ONLY))	KME STANDARD	1	1
	DOOR BLADE W/LOCK	PVC LAMINATED ON 0.6mm GALV'D STEEL PLATE DOOR LOCK : INDICATOR MORTISE LATCH	KME STANDARD	1	1
5	WATER CLOSET (YARD SUPPLY)	WALL MOUNTED VACUUM TYPE WHITE VITREOUS CHINA W/BIDET, "YARD SUPPLY & KME INSTALL"	-	1	1
6	SOIL PIPE (VACUUM SYSTEM)	Ø50 OUTLET W/RUBBER HOSE JOINT (YARD SUPPLY)	-	1	1
7	HI-MACS TOP W/WASH BASIN	TOPCOUNTER(12t) & WHITE VITREOUS CHINA SINGLE LEVER MIXED FAUCET W/POP UP WASTE	-	1	1
8	UNDER CABINET	FLOATING TYPE UNDER CABINET 600(W)*750(H)425(D)_HOSPITAL ONLY, 600(W)*750(H)*525(D)	KME STANDARD	1	1
9	SHOWER MIXER	MIXING VALVE SINGLE LEVER TYPE W/TELEPHONE TYPE SHOWER HEAD & HOSE & SLIDE BAR	-	-	1
10	SHOWER MIXER	BUILT-IN SHOWER TYPE	-	1	-
11	LED MIRROR	600W x 800H W/LED LIGHT	KME STANDARD	1	1
12	LED DOWN LIGHT	CEILING MOUNTING TYPE (AC 220V, 60Hz, 1Ø, 13W, IP44)	-	1	1
13	FLOOR SCUPPER & DRAIN / WASTE PIPE	SUS 304 FRAME W/Ø150 SUS 304 GRATING & 40A SPP W/RUBBER HOSE JOINT	KME STANDARD	1	1
14	EXHAUST VALVE	WALL MOUNTING TYPE W/ELBOW CONNECTOR KU-100/WHITE	KME STANDARD	1	1
15	DOOR SWITCH	POLAR WHITE (AC 250V 16AX / 1WAY, IP 20)	KME STANDARD KSW-F11	1	1
16	JUNCTION BOX (FOR LIGHT & RECEPTACLE)	ABS RESIN (6-GLAND, 9P), IP44	KME STANDARD	1	1
17	JUNCTION BOX (FOR 2W SPEAKER)	ABS RESIN (4-GLAND, 6P), IP44	KME STANDARD	1	1
18	SPEAKER(2W) (FOR U/T)	FLSH TYPE (YARD SUPPLY)	-	1	1

Specifications

HIGH-END TYPE GENERAL TYPE

• Shower • Bath

No.	Description	Specification	Model no	Q'TY / SET	
				S	B
19	SHOWER BOOTH	HINGE TYPE : SUPPORT W/8T TOUGHEN GLASS (TRANSLUCENT)	KME STANDARD	1	-
20	TOWEL SHELF & BAR	SUS304 / 535 x 211 x 117	-	-	1
21	TOWEL HANGER	SUS & CHROME PLATED BRASS	-	1	-
22	SOAP DISH	PLASTIC & CHROME PLATED	-	1	1
23	SHOWER SHELF	GLASS & CHROME PLATED BRASS	-	1	1
24	DOUBLE PAPER HOLDER	SUS & CHROME PLATED BRASS	-	1	-
25	PAPER HOLDER (COLOR : BLACK)	SUS & CHROME PLATED BRASS	-	-	1
26	GRAB RAIL	SUS & CHROME PLATED BRASS	-	-	2
27	DOOR ADJUSTER	SUS & CHROME PLATED BRASS	-	1	1
28	COAT HOOK	STAINLESS STEEL COLOR : SILVER	-	1	1
29	RECEPTACLE (FOR HAIR DRYER)	AC 250V, 50/60Hz, 16A	KME STANDARD	1	1
30	RECEPTACLE (FOR BIDET)	AC 250V, 50/60Hz, 16A	KME STANDARD	1	1
31	HOT WATER PIPE	Ø12 PVC COVERED COPPER PIPE W/BITE TYPE UNION BALL VALVE (Ø12xPF1/2") W/ SUS FLEX. HOSE (L=300, PT1/2" MALE)	KME STANDARD	1	1
32	FRESH WATER PIPE	Ø12 PVC COVERED COPPER PIPE W/BITE TYPE UNION BALL VALVE (Ø12xPF1/2") W/ SUS FLEX. HOSE (L=300, PT1/2" MALE)	KME STANDARD	1	1
33	BATH TUB	GLASS FIBER REINFORCED PLASTIC(SMC) W/OVER FLOW WHITE (720X x 1500L)	KME STANDARD	-	1
34	GLASS PARTITION	AL, FRAME W/8.0T TOUGHEN GLASS(TRANSLUCENT)	KME STANDARD	-	1
35	STOP V/V (FOR BIDET)	CHROME PLATED BRASS	-	1	1
36	WASTE BASKET	ABS(WHITE), 6LITER 225(W) x 240(H) x 135(D)	-	1	1

GENERAL UNIT

Bath & Shower Type

KME UNIT TOILET provides type-specific functions, is durable, well-designed, and systemized, and offers a single finished product. We can directly produce and supply products of various designs, such as shower booth types, bathtub types, and customized designs based on customer standards.

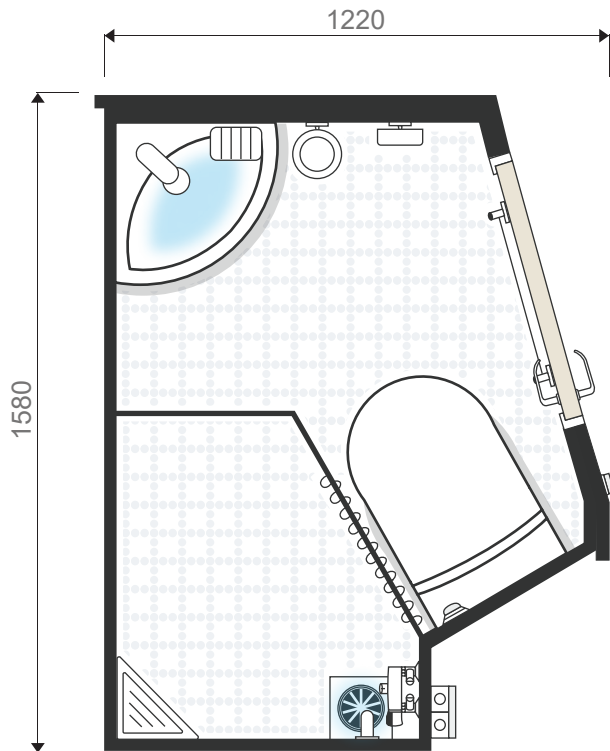
- Flexible Design
- Simple Installation
- High Quality
- Competitive Pricing
- Easy Handling



PREFABRICATED WET UNIT

HIGH-END TYPE GENERAL TYPE

We can directly produce and supply products of various designs, such as shower booth types, bathtub types, and customized designs based on customer standards.

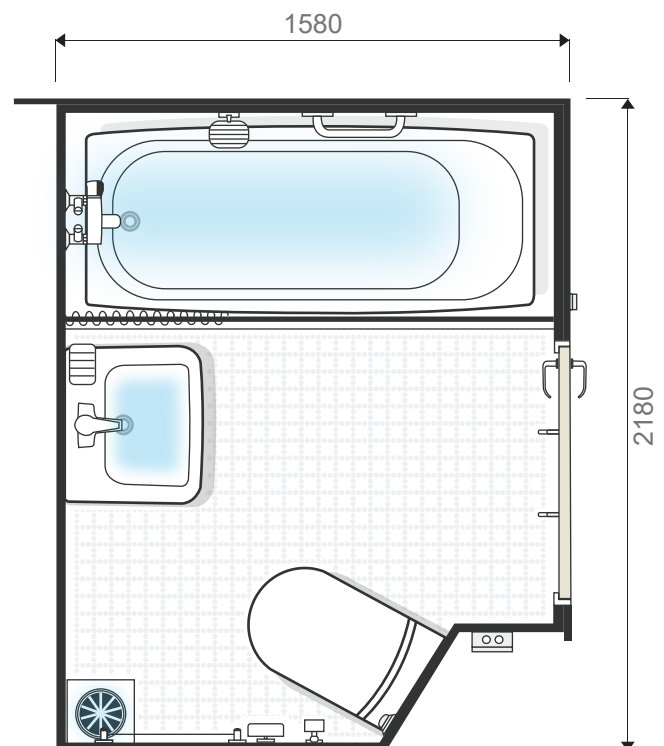


SHOWER TYPE

- Direct production and supply of products.
- Custom production based on customer requests.

BATH TYPE

- Direct production and supply of products.
- Custom production based on customer requests.



Specifications

HIGH-END TYPE GENERAL TYPE

• Shower • Bath

No.	Description	Specification	Model no	Q'TY / SET	
				S	B
1	FLOOR	NON-SLIP MOSAIC TILE & ON 3.2mm STEEL PLATE	-	1	1
2	INSIDE WALL PANEL	PVC LAMINATED ON 0.6mm GALV'D STEEL PLATE W/15mm MINERAL WOOL, TOTAL THK. 30mm	-	1	1
3	OUTSIDE WALL PANEL	PVC LAMINATED ON 0.6mm GALV'D STEEL PLATE W/15mm MINERAL WOOL, TOTAL THK. 20mm	-	1	1
4	DOOR & FRAME	BLADE : PVC FILM LAMINATED ON 0.6mm GALV'D STEEL SHEET CLEAR SIZE : 600(W) x 1800(H), 800(W) x 1800(H)_111 RM. ONLY FRAME : BAKED ENAMEL PAINTED ON 1.6mm STEEL PLATE	-	-	1
		BLADE : PVC FILM LAMINATED ON 0.6mm GALV'D STEEL SHEET CLEAR SIZE : 600(W) x 1800(H) FRAME : BAKED ENAMEL PAINTED ON 1.2mm STEEL PLATE	-	1	-
5	BATH TUB	GLASS FIBER REINFORCED PLASTIC(SMC) W/OVER FLOW WHITE	-	-	1
6	WATER CLOSET	WALL MOUNTED WHITE VITREOUS CHINA VACUUM TYPE (VACDRIN)	-	1	1
7	SOIL PIPE (VACUUM SYSTEM)	Ø50 OUTLET W/RUBBER HOSE JOINT	-	1	-
8	WASH BASIN	WHITE VITREOUS CHINA SINGLE LEVER FAUCET W/POP UP WASTE	-	-	1
	WASH BASIN (CORNER TYPE)	WHITE VITREOUS CHINA SINGLE LEVER FAUCET W/POP UP WASTE	-	1	0
9	SHOWER MIXER	THERMOSTATIC MIXING VALVE W/TELEPHONE TYPE SHOWER HEAD & HOSE & SLIDE BAR	-	1	-
10	BATH MIXER	THERMOSTATIC MIXING VALVE W/TELEPHONE TYPE SHOWER HEAD & HOSE	-	-	1
11	TOILET CABINET	MOULDED PLASTIC BODY W/MIRROR (TC01-AC2-C1)	-	-	1
	TOILET CABINET (CORNER TYPE)	MOULDED PLASTIC BODY W/MIRROR (TC04-SC2-C1)	-	1	-
12	FLOOR SCUPPER & DRAIN / WASTE PIPE	SUS 304 FRAME W/Ø150 SUS 304 GRATING & 40A SPP W/RUBBER HOSE JOINT	-	2	1
13	SHOWER CURTAIN	WATER PROOF TYPE CURTAIN WITH AL. RAIL	-	-	1
		POLYESTER CURTAIN WITH AL. RAIL	-	1	-
14	TASSEL HOOK	CHROME PLATED BRASS(CTH-01)	-	1	1
15	HOT WATER PIPE	Ø12 PVC COVERED COPPER PIPE W/BITE TYPE UNION BALL VALVE (Ø12xPF1/2") W/ SUS FLEXIBLE HOSE(300L)	-	1	1

Specifications

HIGH-END TYPE GENERAL TYPE

• Shower • Bath

No.	Description	Specification	Model no	Q'TY / SET	
				S	B
16	FRESH WATER PIPE	Ø12 PVC COVERED COPPER PIPE W/BITE TYPE UNION BALL VALVE (Ø12xPF1/2") W/ SUS FLEXIBLE HOSE(300L)	-	1	1
17	EXHAUST VALVE	KU-100/WHITE WALL MOUNTING TYPE W/ELBOW CONNECTOR	-	1	1
18	JUNCTION BOX (FOR LIGHT)	ABS RESIN (4-GLAND, 6P), IP44	-	1	1
19	JUNCTION BOX (FOR SPEAKER)	ABS RESIN (4-GLAND, 6P), IP44	-	1	1
20	MIRROR LIGHT	LED11W, CEILING MOUNTING TYPE W/SHAVER SOCKET, IP44 (AC 220V, 60Hz, 1Ø), RECEPTACLE(UNIVERSAL TYPE) WITH ISOLATION TRANSFORMER	-	-	1
		LED 8W, CEILING MOUNTING TYPE W/SHAVER SOCKET, IP44 (AC 220V, 60Hz, 1Ø) WITH ISOLATION TRANSFORMER	-	1	-
21	DOOR SWITCH	KSW-F11, POLAR WHITE (AC 250V 16AX / 1WAY, IP 20)	-	1	1
22	SPEAKER(1W) (FOR U/T)	W/T FLUSH TYPE 1W SPEAKER (YARD SUPPLY)	-	1	1
23	SHOWER COAMING	2.0t SUS PLATE W/Ø12.7 SUS ROUND BAR (HEIGHT : 100mm)	-	1	-
24	CORNER SHELF	SUS & CHROME PLATED BRASS(KS-02)	-	1	-
25	TOWEL BAR	SUS & CHROME PLATED BRASS(TB-03)	-	1	1
26	SOAP DISH FOR WASH BASIN	STAINLESS STEEL(SD-04)	-	1	1
27	SOAP DISH FOR SHOWER	SUS & CHROME PLATED BRASS(SD-03)	-	-	1
28	PAPER HOLDER	SUS & CHROME PLATED BRASS(PH-03)	-	1	1
29	GRAB RAIL	SUS & CHROME PLATED BRASS(GR-03)	-	2	2
30	COAT & HAT HOOK	SUS & CHROME PLATED BRASS(CH-02)	-	1	2
31	DOOR ADJUSTER	SUS & CHROME PLATED BRASS(KDA-02)	-	-	1
		SUS & CHROME PLATED BRASS(938.64.002)	-	1	-
32	TOILET BRUSH	SPONGE TYPE	-	-	1
		BRASS CHROME PLATED & PLASTIC (TOILET BRUSH HOLDER-02)	-	1	-
33	CLOTHES LINE	STAINLESS STEEL(KL-01)	-	-	1

· Wall Panel

Surface finish: 0.6mm thick galvanized steel sheet finished with decorative material.

Standard width: 510mm, Maximum length: 2400mm.

Type	Model no.	Thickness	Fire class	Weight	Sound reduction	Thermal transmittance
	W-30	30mm	B-0	12kg/m ²	STC 29dB	1.62kcal/m ² h °C
	W-30D	45mm	B-15	15kg/m ²	STC 29dB	0.81kcal/m ² h °C
	W-50	50mm	B-15	19.2kg/m ²	STC 39dB RW 42dB	0.52kcal/m ² h °C
	W-80	Min. 80mm	B-15	24kg/m ²	STC 44dB	0.48kcal/m ² h °C

· Ceiling Panel

Surface finish: 0.6mm thick galvanized steel sheet finished with decorative material.

Standard width: 510mm, Maximum length: 2400mm.

Type	Model no.	Thickness	Fire class	Weight	Sound reduction	Thermal transmittance
	C30	30mm	B-0	12kg/m ²	STC 52dB	1.62kcal/m ² h °C
	C30D	45mm	B-15	15kg/m ²	STC 53dB	0.81kcal/m ² h °C
 Incl. Steel deck	C30A	30mm	B-0	12kg/m ²	-	1.62kcal/m ² h °C

· Approval certificates

Type	Fire class	Classification / Authority				
		ABS	DNV	KR	LR	BV / MED
KME-UT-W30	B-0	○	○	○	○	○
KME-UT-C30	B-0	○	○	○	○	○
KME-UT-C30A	B-0	○	○	○	○	○
KME-UT-W50	B-15	○	○	○	○	○
KME-UT-W80	B-15	○	○	○	○	○
KME-UT-C30D	B-15	○	○	○	○	○

