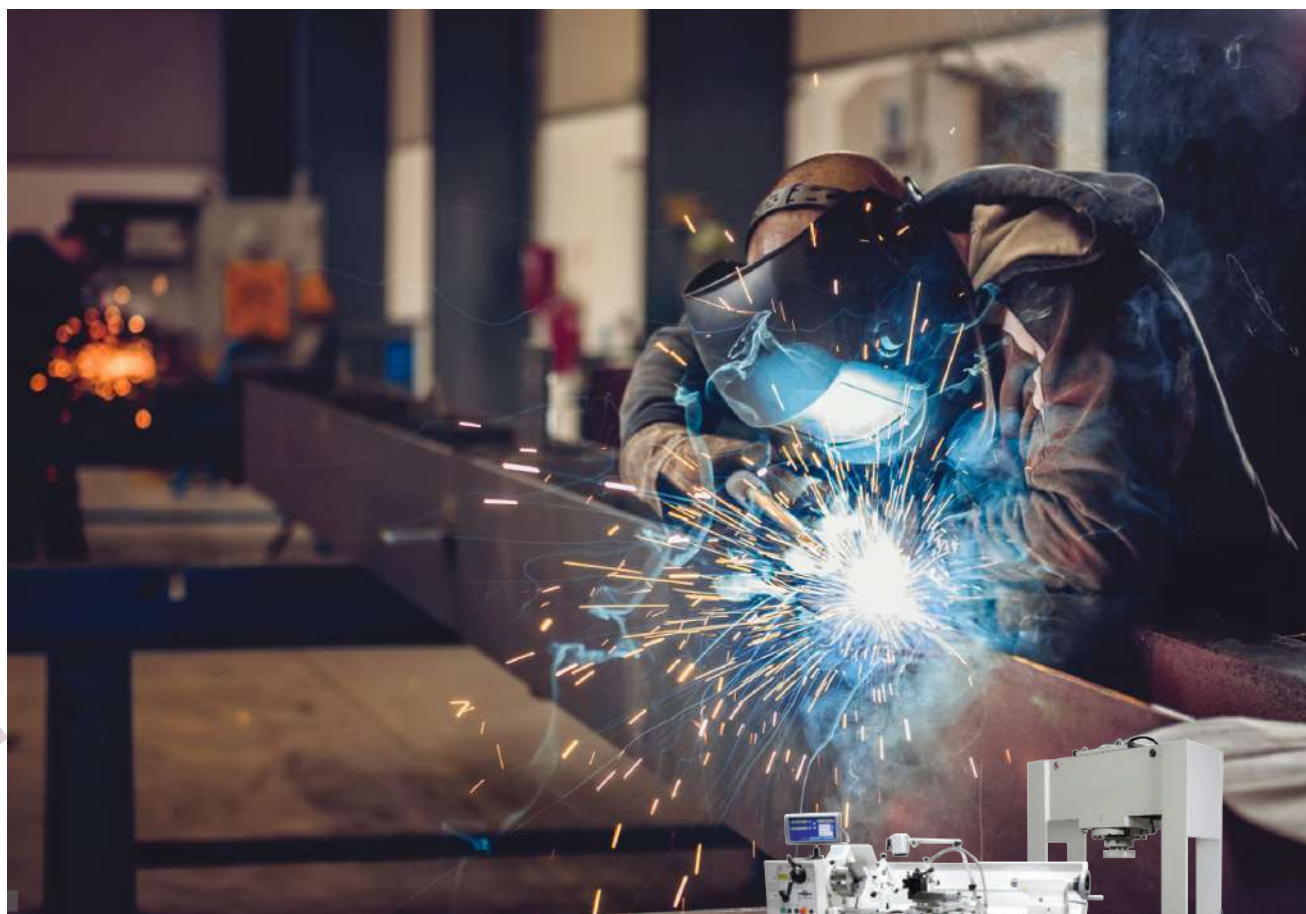


WORKSHOP
EQUIPMENTS

CATALOGUE

WORKSHOP EQUIPMENTS

Safe and reliable workshop equipment
essential for offshore vessels



2024 It is produced
by KME Co., Ltd



Company introduction

· History

- 2025 09 **HULE Electrical** sole agency in South Korea.
- 03 **CHANGZHOU Marine Cable** sole agency in South Korea.
- 2024 12 **Kaune** sole agency in South Korea.
- 07 **Astro** sole agency in Marine Segment.
- 07 **B-15 class back box** achieves BV Certification for fire protection.
- 2023 12 Registered vendor to **KANGNAM** Shipbuilding.
- 09 Registered vendor to **MODEC**.
- 08 Registered vendor to **SEATRIUM**.
- 03 Establishment of **Unit Toilet Factory**.
- 2022 05 Registered vendor to **HSG Sungdong** Shipbuilding.
- 04 Acquired ISO 45001:2018 certification.
- Registered vendor to **DAE SUN** Shipbuilding & Engineering Co., Ltd.
- 02 Registered vendor to **Hyundai** Heavy Industries.
- 2021 09 Registered vendor to **Zvezda** Shipbuilding in Russia.
- 06 Development of **GRP Ex Junction Box** certification completed.
- 2020 06 Registered vendor to **Hanjin** Heavy Industries.
- 2019 10 Registered vendor to **Hyundai Mipo** Dockyard (HMD) Co., Ltd.
- 2014 06 Registered vendor to **DAEWOO** Shipbuilding & Marine Engineering Co., Ltd.
- Low Location Light for H.3401
- 2013 10 Registered vendor to **SAMSUNG** Heavy Industries Co., Ltd.
- 2009 02 **Established KME Co., Ltd.**



※ For more information visit h-kme.com

· Location



Busan (Head Office)

29, Nakdong-daero 1302 beon-gil,
Sasang-gu, Busan, South Korea



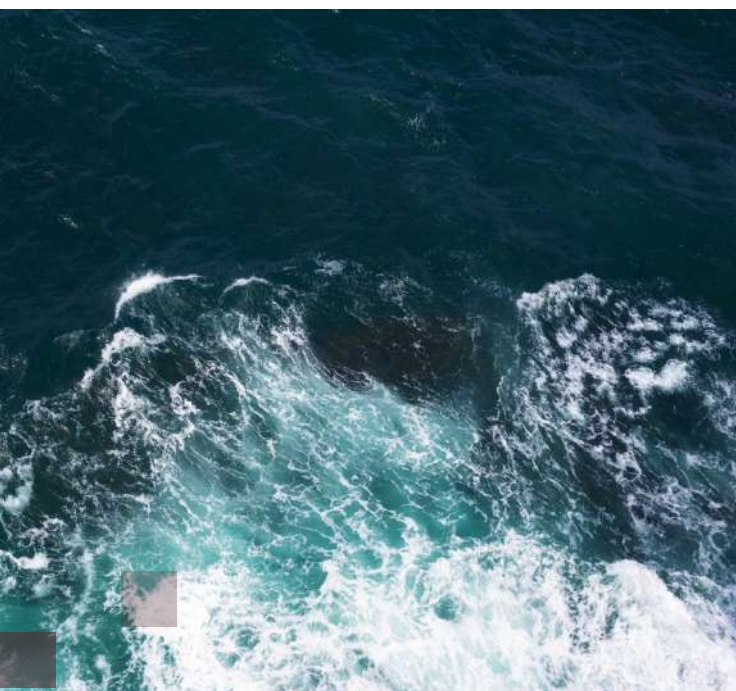
Gimhae (Office/factory)

25, Seobu-ro 1331 beon-gil, Juchon-myeon,
Gimhae-si, Gyeongsangnam-do, South Korea



Providing Reliable Workshop Equipment for Ships

KME Co., Ltd. is a specialized company that provides a wide range of workshop equipment necessary for ships navigating the seas. Our goal is to provide customers with a safe and efficient working environment. Designed with the harsh conditions of the offshore environment in mind, our equipment delivers reliable performance and meets the diverse needs of our customers.



Product Overview

KME's ship workshop equipment is used for a wide range of tasks, from routine maintenance to complex repairs. Made from materials with enhanced corrosion resistance and durability, the equipment operates reliably even in harsh offshore conditions, such as exposure to salt and humidity. Each piece of equipment is equipped with high waterproof functionality, maintaining reliability over extended periods of use.

Available Equipment and Facilities

· List (Workshop Equipment)



LATHE MACHINE

The LATHE MACHINE is crucial for precision metalworking, handling various ship components with enhanced accuracy and efficiency.



VERTICAL MILLING MACHINE

The VERTICAL MILLING MACHINE precisely cuts complex metal parts, ensuring the mechanical stability of ships.



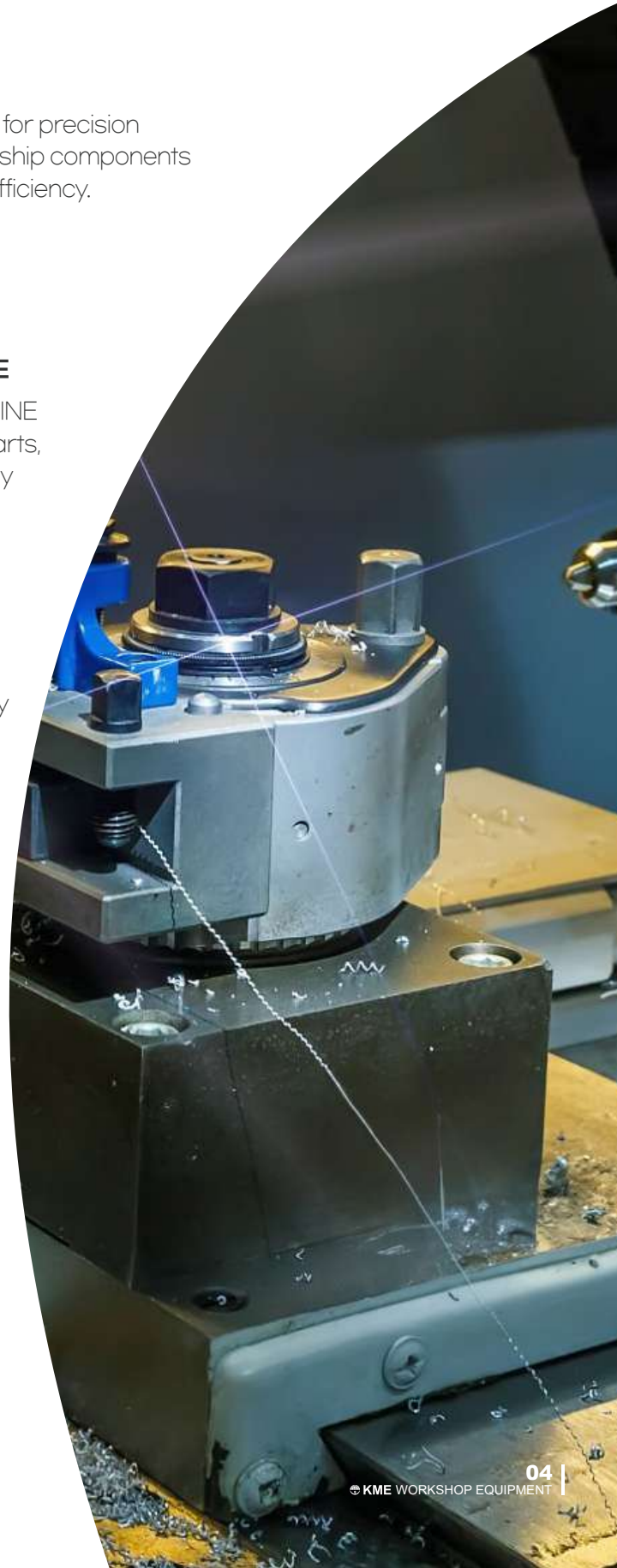
DRILLING MACHINE

The DRILLING MACHINE quickly and accurately drills holes in metals and other materials needed for ship components.



FOLDING MACHINE

The FOLDING MACHINE bends metal sheets, ideal for producing strong and durable offshore parts.



Available Equipment and Facilities

· List (Workshop Equipment)



WELDING MACHINE

The WELDING MACHINE ensures structural integrity through durable, long-lasting metal welding.



GRINDING MACHINE

A machine used to grind and smooth the surfaces of metals and other materials. This equipment is used to remove unnecessary parts of components or to evenly finish the surface, making it essential for precision machining and maintenance work.



HYDRAULIC PRESS

Equipment used to compress or shape metals and other materials by applying significant force. It utilizes a hydraulic system to generate high pressure for bending or forming metal plates.



SCISSOR TABLE

A device used to raise and lower work items, featuring a scissor-like lift mechanism to adjust height. It helps workers handle heavy equipment or materials safely and conveniently.



Available Equipment and Facilities

· List (Workshop Equipment)



EXTRACTION ARM FOR WELDING

Equipment designed to efficiently remove smoke and gases generated during welding operations. It is necessary to ensure safety and cleanliness in the work environment by immediately expelling harmful substances produced during welding.



LAPPING MACHINE

A polishing machine used to achieve flat and smooth surfaces on components. This equipment performs highly precise finishing operations, especially on parts that require tight tolerances.



ROLLING MACHINE

A machine used to bend metal sheets into cylindrical or other shapes. It is essential for various metal forming operations and the fabrication of pipes or metal structures.



SHEET GUILLOTINE SHEAR

Equipment used for the precise cutting of metal sheets or plates. It employs high-strength blades to quickly and accurately cut metals like steel and aluminum to the desired length and size.



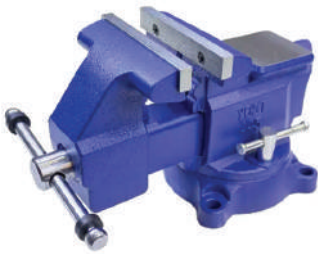
Available Equipment and Facilities

· List (Workshop Equipment)



PSV TEST BENCH

Equipment used to test Pressure Safety Valves (PSVs). It is utilized to verify the accuracy and safety of valves, making it essential for ensuring safe operations on vessels.



WISE

A device used to firmly hold objects during work. It provides stable support for various tasks, including drilling, cutting, and grinding.



WELDING ROD OVEN

Equipment used for drying and storing welding rods to maintain their quality. It helps prevent welding rods from absorbing moisture, ensuring optimal welding quality.



Available Equipment and Facilities

· List (Workshop Furniture)



UNIVERSAL SHELVING

Available in two versions - either with shelf supports or closed side panels - and a variety of heights, depths, and field widths, the slot-in system is quick and easy to assemble for a wide range of requirements.



SLIDING SHELF UNITS

Even when space is limited, they create room for various stored items. The principle is quite simple: the individual shelf units are pushed together and opened only where something needs to be taken out.



HINGED DOOR CABINETS

Hinged door cabinets provide a solution for securely and systematically storing various warehouse items.



SLIDING-DOOR CABINETS

Smoothly operating doors remain within the cabinet body, saving space by not protruding into the passage area.



Available Equipment and Facilities

List (Workshop Furniture)



CONTAINERS AND LARGE-SCALE PIN CABINETS

Suitable for storing containers on adjustable shelves, optimized to the size of the containers. Large-scale cabinets offer ample space and are an ideal way to efficiently utilize space. Drawers provide additional space for high-quality warehouse goods and tools.



WORKBENCHES

Optimized work environments can be created using configurable workbench tops, drawer cabinets, power cabinets, vices, and rear panels.



SYSTEM WORKBENCHES

System workbenches provide stable and cost-effective solutions for workspaces in workshops and production areas.



MOVE WORKSTATION SYSTEMS

Each module can be freely configured and adjusted to meet the specific processes and requirements of the customer. These systems can be used in various locations such as workshops, production areas, assembly lines, and laboratories.



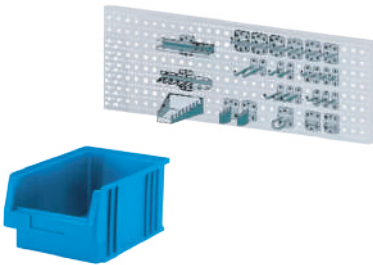
Available Equipment and Facilities

· List (Workshop Furniture)



TEST AND INSPECTION WORKSTATIONS

Various components can be used to assemble different types of test stations, meeting individual customer requirements and satisfying demanding standards.



ACCESSORIES

Storage containers and keyhole hooks help keep workbenches and workspaces tidy, and when used as accessories for assembly trolleys, complete storage walls, or shelving systems, they organize tools and accessories, keeping them within easy reach.



Service and Support



Providing Continuous Technical Support

KME provides continuous technical support services to quickly resolve any issues that may arise while customers use the equipment. This service responds immediately to customer inquiries, diagnosing problems and offering appropriate solutions.



Systematic Maintenance Program for Equipment Performance

KME maintains the performance of equipment and supports the stable operation of ships through its maintenance program. This program includes regular inspections and preventive maintenance to ensure optimal performance of the equipment.



Future-Oriented Vision

KME Co., Ltd. is committed to continuous research and development to improve safety and efficiency in the maritime industry.



Continuous Innovation

We will lead the advancement of the maritime industry by continuously developing new technologies and solutions.



Global Partnerships

Strengthening our global network to create value in various markets by collaborating with customers worldwide.

KME provides high-quality, reliable ship workshop equipment to meet the diverse needs of our customers. Our equipment delivers outstanding performance and creates a stable working environment.





· **ADDRESS** : 29, Nakdong-daero1302 beon-gil, Sasang-gu, Busan, South Korea
· **TEL** : +82-51-327-2670 · **FAX** : +82-51-327-2673 · **E-mail** : sales@h-kme.com